



CATHEDRAL of SAINT PETER

MONTHLY NEWSLETTER

IN THIS ISSUE:

3

A Letter from
Our Cathedral Rector

4

Basic Questions About Our
Stewardship Renewal

6

The Joy of Stewardship
of Treasure:
Giving in Thanksgiving for God's Gifts

7

Dedicating Our Time
and Prayer During
Respect Life Month
*How We Can Focus Our Efforts to
Uphold the Sanctity of Life*

The Wednesday Work Crew *Dutifully Taking Care of Maintenance, Repairs, and More*



(from left) Steve Konradt, Phil Schaefer, Dennis Koch, Rob Steuer, Mike Neff, and Verlan Lanter

A lot goes into maintaining the property of our Cathedral. We're grateful to have our Wednesday Work Crew (WWC) to help maintain, fix, or build anything in need over the past 40 years.

"The first meeting was Jan. 28, 1985," says Dennis Koch, WWC volunteer. "The group was initiated by Tom Bedell. At the 10th anniversary, they had 14 members. With that number, they were able to get a lot done."

There was also more to do with a school, a convent building, a gym, a church, and a rectory. They had some leisure time too.

"Breakfast would be prepared in the powerhouse, and there'd be dinners,"

continued on page 2

The Wednesday Work Crew *continued from front cover*

Dennis says. “I joined in 2012. I had been retired for about a year and a half. I enjoy doing home repair and maintenance, so I thought I’d see if I could do anything to help the parish.”

There were fewer members when Dennis joined.

“There was John McCoy, Walt Ortman, and Verlan Lanter,” Dennis says. “John worked with the WWC until two years ago — he was 90. I learned a great deal from him, not only how to repair something, but also where to find the breakers and valves to shut the power or water off. He is missed because of his knowledge and because he owns every tool you could need. He’s still called upon sometimes to help figure something out.”

The current crew meets on Wednesdays around 7:30 a.m. in the powerhouse behind the school and works until about 2:30 p.m. In addition to Dennis, current members include retired accountant Verlan Lanter, architect Mike Neff, police officer Rob Steuer, and their newest member, Steve Konradt. Greg Crook also helps part-time when he is not working at a local school. Phil Schaefer, who works part-time for the parish, helps too.

“We work together as a team,” Dennis says. “Since we’re all old guys, we try to have at least two people work on a project for safety, and so at least one of us remembers what to do.”

The group does a myriad of jobs around the property.

“We get involved in any type of work,” Dennis says. “This includes cutting grass, trimming bushes, pulling weeds, or filling holes. There is also changing lights and replacing ballasts, switches, and defective outlets. We repair leaking faucets, clean clogged drains, paint, hang pictures, change filters, grease motors, clean AC coils, frame, plaster — just about anything and everything.”

These services allow the crew to be stewards to the parish community with their time and talents.

“We try our best to keep the church, school, gym,

and rectory as nice as possible,” Dennis says. “A well-maintained facility helps attract new members and keep current parishioners. We try to get the area by the St. Francis Garden entry maintained before weekend Masses. Although we’re the Wednesday Work Crew, we do things on other days. We set up for Palm Sunday, taken down on Monday, and Tuesday Chrism Mass. Sister Tess Markus keeps us busy during that time.”

The crew encounters some challenges as well.

“Trying to maintain the old buildings is challenging,” Dennis says. “Plumbing is especially troublesome. Replacement parts are often hard to find. The valve under the sink in the rectory won’t shut the water off, so we have to wait for an acceptable time to shut off all the water to the building to replace it.”

Work orders are managed on Google Sheets. Dennis prints the list on Tuesday evenings to review on Wednesdays. He keeps a schedule for routine maintenance.

Taking responsibility for the cleanliness and maintenance of the property is the group’s main focus, though they get more out of it.

“Being a member of the group gives you a feeling of ownership,” Dennis says. “You look around and know you’ve helped make the church facilities nicer. It isn’t just a building on Sunday. Before working with the group, I never thought about who pulled the weeds or changed the bulbs. We learn to work together on projects and become friends.”

The group is always looking for more volunteers, so consider sharing your time and talents with the Wednesday Work Crew!

“Being a member of the group gives you a feeling of ownership. You look around and know you’ve helped make the church facilities nicer. It isn’t just a building on Sunday.”

— Dennis Koch

Anyone interested in joining the Wednesday Work Crew may contact Josie Weiler in the parish office at 618-234-1166, ext. 109.

A Letter from Our Cathedral Rector

Pray, Smile, *and* Make the World a Better Place

Dear Parishioners,

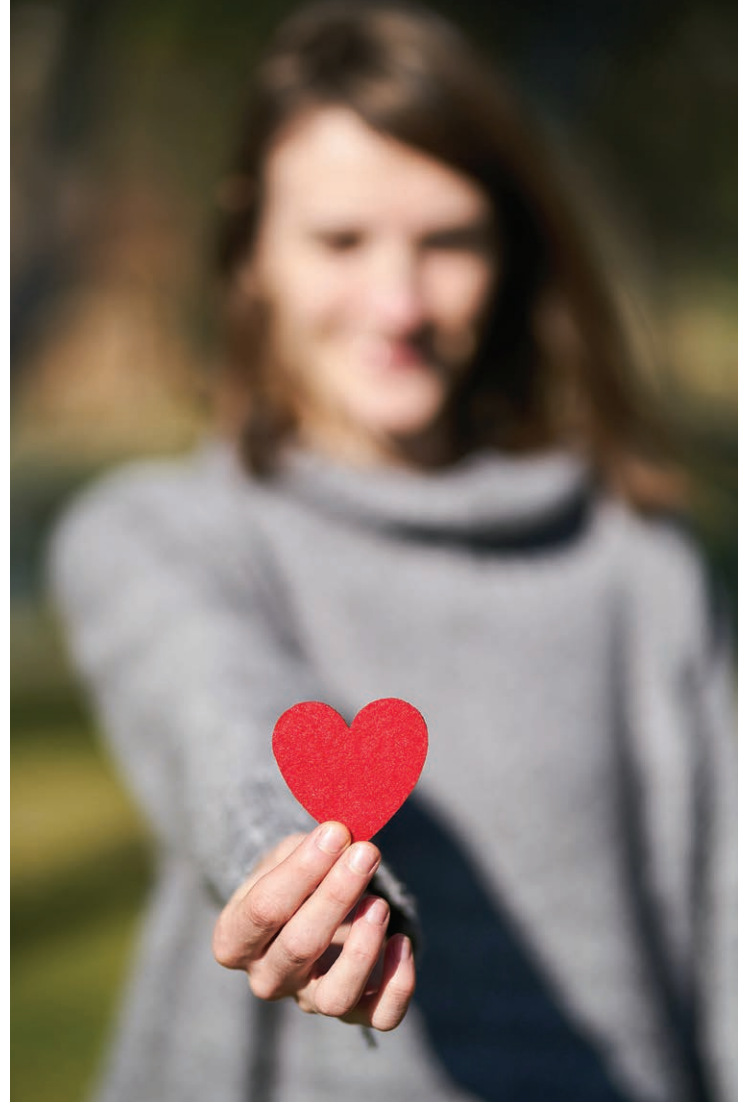
In the Church, we often speak of “new beginnings.” While we usually associate this with spring, the fall season is also a time for renewal. Many aspects of our lives and those of our families have begun or started anew recently.

As I reflect on this season, two thoughts come to mind. First, there is never a wrong time for spiritual renewal. Jesus encourages us to have rich prayer lives. Now is a great time to deepen your personal prayer life and, if possible, that of your family. Consider joining a prayer group or coming to Adoration. Scheduling regular personal and family prayer can enrich your lives and create lasting memories for your children.

Second, Jesus teaches us to “love one another.” Studies show that acts of kindness reduce pain, depression, and stress. A simple smile can uplift others and ourselves. Engaging in parish ministries and volunteer activities can make kindness a habit, fulfilling both our talents and interests.

As we embark on these new beginnings, let’s focus on stewardship and discipleship. Stewardship is not just about giving money but about sharing our time and talents. Our parish thrives when each of us actively participates in its life and mission. This season, I encourage you to find ways to serve. Whether it’s through prayer groups, volunteering in our various ministries, or helping those in need, your contributions make a difference.

Discipleship calls us to follow Jesus’ example in our daily lives. By committing to a life of prayer, kindness, and service, we become true disciples of Christ. This not only transforms our own lives but also brings the light of Christ to those around us.



These two simple actions — praying more and showing kindness — can significantly impact our lives and the lives of those around us. As we strive to be good stewards and faithful disciples, let’s support each other in these endeavors.

Peace,

Fr Godfrey OSB

Very Rev. Godfrey Mullen, OSB
Cathedral Rector



Basic Questions About OUR STEWARDSHIP

Why should I fill out a commitment card?

Your Commitment Card allows you to make commitments to prayer, parish ministries, and offertory giving, or what we at Cathedral of St. Peter call “time, talent, and treasure.” There’s a two-fold reason to complete your card. First, it is an excellent opportunity to move forward spiritually and personally. Second, when you fill out a card, our parish is much better able to manage our many volunteers and make budgeting decisions.

How many parish ministries are there at Cathedral of St. Peter?

“Ministry” is a general term for any parish group, organization, or regular activity. There are dozens of ministries in our parish. You can sign up for certain ministries, or re-commit yourself if you’re already involved.

What if I sign up for a ministry, but later find I’m not very interested?

You are not making a solemn promise to participate in a particular ministry when you mark it on your commitment card. If you find that the parish group is different from what you thought, or simply that their meeting time doesn’t fit your schedule, you can change your mind. There are plenty of other ministries to consider.

I’m hesitant to make a firm financial pledge. What if I lose my job?

Your commitment card isn’t a legal contract. If your circumstances change, your gift will change. In Scripture, we are asked to “give according to our means.” So if you lose your job, you may be unable to give at the level you pledged. Likewise, if you get a promotion, you may be able to give more. That is why at Cathedral of St. Peter, our standard of giving is based upon a percentage of income.

What happens if I don’t fill out a commitment card?

Returning a card is an important part of being an active member of Cathedral of St. Peter. If for some reason you lose your card, we’ll send you a reminder letter with an extra commitment card. Please make every effort to return it!

TIME, TALENT, AND TREASURE

STEWARDSHIP OF TIME

Our definition of Stewardship of Time: Using my time on earth wisely; making time for personal prayer, family prayer, communal prayer, and quality time with friends and loved ones.

The bottom line about prayer: Without prayer, we cannot thrive spiritually. As Catholic Christians, it is a necessity to spend time each day speaking and listening to God. This includes reading Scripture and saying prayers such as the Our Father and Hail Mary, but also, it should include a heart-to-heart conversation with Jesus. He wants us to bring him all our fears, longings, needs, and desires.

What kind of Time commitments should I make?

Your commitment card lists several suggestions for how to spend time with God in prayer. Review your current prayer life and take a step forward. For instance, start having daily prayers with your children or spouse. Commit to praying the rosary on the way to work or reading scripture before bed each night.

STEWARDSHIP OF TALENT

Our definition of Stewardship of Talent: Using my God-given abilities to strengthen the Church and help others, especially through parish ministries and activities.

The bottom line about parish ministry: No Catholic Christian exists in a vacuum. Scripture makes it clear that we must function within the wider faith community, putting our gifts in the service of others. Along with going to Sunday Mass; we need to be involved in parish life and ministry.

What kind of Talent commitments should I make? If you’re not involved in anything in our parish, now is the perfect opportunity to take a step forward. Check out our

P RENEWAL

commitment card for a list of ministries. If you're already involved, re-commit yourself to the important work you do. And if you feel God is calling you forward – sign up for something new!

STEWARDSHIP OF TREASURE

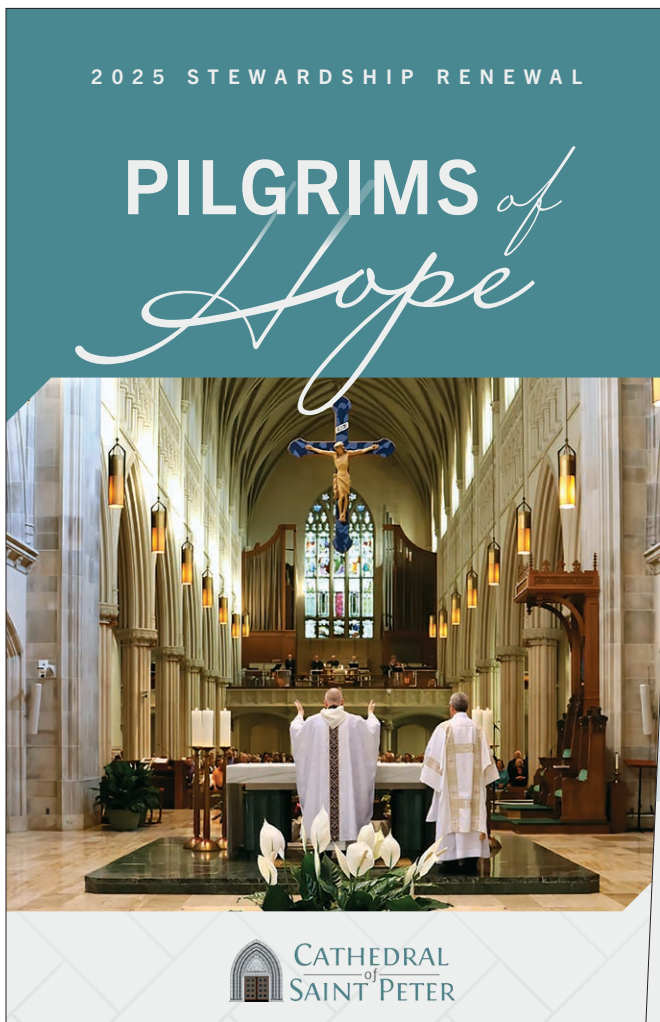
Our definition of Stewardship of Treasure: The wise and just management of my financial resources; giving a proportionate amount of my income to the parish.

The bottom line about financial support: We need to take seriously the Biblical concept of the tithe, and start giving

based on a percentage of income. It's our responsibility to support the Church with our personal involvement and our financial support, another way to demonstrate our priorities.

What kind of Treasure commitments should I make?

Our goal at Cathedral of St. Peter is to give five percent of income to the offertory. Grab a calculator and figure out your target gift based on your total household income. Then make a plan for increasing your gift incrementally to reach five percent. During our Stewardship Renewal, choose a weekly or monthly gift to the parish, and be faithful to it for the next year.



PILGRIMS of Hope

2025 Commitment Card
Cathedral of St. Peter

First & Last Name _____

Phone _____

Email _____

Spouse: First & Last Name _____

Spouse: Phone _____

Spouse: Email _____

Mailing Address _____

City _____ State _____ ZIP _____

After completion, please bring this card to Mass on October 11/12, or mail using the envelope provided. Thank you and God bless you!

Please bring your
Commitment
Card to Mass on
Commitment
SUNDAY,
OCTOBER 11-12.
How will you use
your time, talent,
and treasure in
our parish?

The Joy of Stewardship of Treasure:

Giving in Thanksgiving for God's Gifts

Stewardship is a foundational concept, encompassing the responsible management of our time, talent, and treasure. When it comes to stewardship of treasure, many Catholics might associate it primarily with supporting the financial needs of the Church. While this is true to some extent, the deeper essence of stewardship lies in giving out of thanksgiving for the abundant gifts God has bestowed upon us. Furthermore, stewardship of treasure, including the practice of tithing, is firmly rooted in Scripture.

Gratitude and Generosity

Stewardship of treasure is not solely about fulfilling a financial obligation to the Church. It is a profound expression of gratitude for the blessings we receive from God. As Catholics, we recognize that all we have, whether it's our income, material possessions, or financial resources, ultimately belongs to God. In gratitude, we share a portion of these blessings as a way of giving back to God.

Tithing as a Scriptural Principle

The practice of tithing, giving a tenth of one's income, has a strong Scriptural foundation. In the Old Testament, tithing was established to support the work of the temple and the needs of the Levites, who served the religious community. In the book of Malachi, we read, "Bring the whole tithe into the storehouse, that there may be food in my house" (Malachi 3:10).

In the New Testament, Jesus reaffirms the importance of giving. He praises the widow who gave her two small coins, emphasizing that her gift, though small in quantity, was great in significance because it represented her willingness to give everything (Mark 12:41-44).

The Joy of Giving

Stewardship of treasure should be a joyful act. When we give with a cheerful heart, we mirror God's generosity and love for us. St. Paul reminds us of this in 2 Corinthians 9:7: "Each must do as already determined, without sadness or compulsion, for God loves a cheerful giver."

Moreover, our contributions to the Church enable it to carry out its vital mission – from supporting the clergy to

funding various ministries, charity work, and community outreach. By participating in stewardship of treasure, we play a direct role in spreading the message of Christ and helping those in need.

Challenges and Growth

For some, stewardship of treasure may be challenging, especially in times of financial strain. However, it's important to remember that it's not about the amount we give, but the disposition of our hearts. Even small offerings, when given with love and thanksgiving, carry great spiritual value.

As Catholics, we are called to embrace stewardship of treasure as a way to grow in our faith and deepen our relationship with God. Giving from our resources reflects our trust in God's providence and our desire to share His love with others.

Stewardship of treasure is a powerful and transformative practice for Catholics. It transcends the idea of meeting financial needs and is fundamentally rooted in gratitude and the Scriptural principle of giving. Through this practice, we express our love for God, support the Church's mission, and find joy in sharing our blessings with others, allowing stewardship to be a cornerstone of our faith journey.



Dedicating Our Time and Prayer During *Respect Life Month*

How We Can Focus Our Efforts to Uphold the Sanctity of Life

For many of us, the overturning of *Roe v. Wade* in June of 2022 was a moment of shifting focus. With this major accomplishment in the protection of the unborn on a national level, the movement shifted towards meeting needs at the local level. For Deacon Doug Lugge, Pro-Life Coordinator at the Cathedral of St. Peter, this is where pro-life ministry begins and ends.

“We’ve shifted our pro-life focus to local needs in Illinois,” Deacon Doug says. “Abortion is no longer hidden — it’s front and center. The overturning of *Roe v. Wade* brings the needs of vulnerable mothers and children to our attention even more than they ever have been.”

Deacon Doug’s involvement in pro-life ministry began with a trip to the March for Life in Washington, D.C., with his daughter, then 12 years old, in tow.

“On that trip, I was asked to captain the trip to the March for the following year,” Deacon Doug says. “I was a bit shocked since it was my first trip, but I ended up leading trips to the March for 15 years.”

Aside from participating in the March for Life itself, the greatest impact for Deacon Doug was seeing the effect the trips had on the youth of the parish.

“They were really powerful trips, particularly for our youth,” he says. “My wife and I had a captive audience on the buses and educated them on the effects of abortion, both on mothers and families.”

This October, Deacon Doug is overseeing Respect Life Month at the Cathedral, during which parishioners

“We need to invest in respecting the most vulnerable members of our society. It’s not just about the unborn child, but the impact and repercussions abortion has on mothers and their families — I don’t think it’s fully appreciated.”

— Deacon Doug Lugge



can dedicate more time and prayer to the pro-life cause.

“The Cathedral will be sponsoring a day in the 40 Days for Life campaign, where we pray at the abortion center nearby,” Deacon Doug says. “All parishioners are also invited to participate in all diocesan Respect Life events.”

In addition to diocesan-wide events, Deacon Doug says that Respect Life Month is the ideal time for Cathedral parishioners to invest in the Belleville Pregnancy Care Center, where his wife, Jill, is the president.

“The care center is supported by volunteers, and I’m grateful our parishioners already have such a presence there,” Deacon Doug says. “Respect Life Month is a great time to see what needs there are at the center and spend time there.”

For Deacon Doug, the necessity for stewardship through pro-life ministry is not just about protecting life, but it’s also about caring for mothers and their children long after the threat of abortion has passed.

“We need to invest in respecting the most vulnerable

continued on back cover



CATHEDRAL of SAINT PETER

200 W. Harrison St. • Belleville, IL 62220
(618) 234-1166 • cathedralbelle.org



Dedicating Our Time and Prayer During Respect Life Month *continued from page 7*

members of our society,” he says. “It’s not just about the unborn child, but the impact and repercussions abortion has on mothers and their families — I don’t think it’s fully appreciated.”

Caring for mothers and children in need, especially those vulnerable to abortion, is a way to care for the poor, Deacon Doug suggests.

“Suggesting abortion as care for women is an impoverished view,” he says. “Caring for mothers and children in need is one of the greatest ways we can care for the poor, whether physically or in spirit.”

During Respect Life Month and beyond, the need is great — even the smallest act of service aids the movement for life.

*Those interested
in participating in
Respect Life Month or
in learning more about
how to serve local
mothers and children
may contact Deacon
Doug Lugge at
jdlugge@gmail.com.*



MASS TIMES

Saturday Vigil Mass: 4:00 p.m. | **Sunday:** 8:00 a.m., 10:30 a.m., 5:00 p.m. | **Weekdays:** Monday-Friday 6:45 a.m.

SACRAMENT OF PENANCE (CONFESSIONS)

Monday-Friday: 7:15-7:30 a.m. | **Thursday:** 6:00-7:00 p.m. | **Saturday:** 3:00-3:45 p.m.

ADORATION

Tuesday 12:00-1:00 p.m. | **Thursday** 6:00-7:00 p.m.